

dream weaver

LIGHT, CREATIVITY AND LIFE FILL THE SOUTH-EASTERN MELBOURNE
HOME OF TALENTED TEXTILE ARTIST TAMMY AND HER FAMILY

STORY & STYLING KERRIE-ANN JONES PHOTOGRAPHY CHRIS WARNES



As the sun dips down over the tall trees of south-east Melbourne at the end of a balmy summer's day, textile artist Tammy and her husband, Jonathan, can often be found around an outdoor table, talking over the day with their three teenage children. In the back garden, light and nature entwine beautifully, and it's this connection that the couple loves most about the heritage-listed home they bought back in 2000. "When we found it, it just felt right," says Tammy. "Light is very important to both of us, so its north-facing aspect and leafy location were very appealing."

Since that first viewing, the couple's home has undergone two significant renovations. The first, in 2002, was a partial demolition of the existing interiors, while the second, in 2011, brought size and substance to the already expansive, high-ceilinged property. Making the most of its prized light, the couple extended the house along the ground floor to create a parents' retreat, handing their previous upstairs bedroom over to their children – Lexi, 17, Frankie, 16, and Toby, 13 – as a teenagers' zone. The extension, which runs alongside the pool and garden, includes a library that doubles as Tammy's studio, where her stunning woven artworks are first dreamed up.

It's this space that resonates most with the mother-of-three. "My environment is very important to me," says Tammy. "Surrounding ourselves with nature and artistic work inspires us. We all live at

such a fast pace today – I believe our home should not take but restore and give back energy." Her desire to create a harmonious and creative sanctuary for her family has guided her elegant style. "I like to fill my home with artisan objects that I can connect with," explains the weaver. "Things will catch my eye or resonate with me and I know they'll find a place in my home."

A very personal artistic aesthetic runs throughout the interiors. Many of the sumptuous rugs bringing warmth and colour to the timber floors are the result of a collaboration with Cadrys; beautiful weaves created by Tammy – who started the art form six years ago and had her first exhibition, "The Spirit", in 2014 – line the walls. Artworks by Tammy's father, the artist Tim Blashki, hang in the family's home office and daughter Frankie's room. Tammy's husband Jonathan has also had creative input: he designed the large custom dining table, which anchors the space between the kitchen and living room and has been home to family dinners, parties and exam studies.

The handsome table has also been the centre for weaving workshops that Tammy regularly holds for beginners and yarn devotees alike. "Tapping into people's creativity, that they never thought they had, is extremely rewarding," she says. "I enjoy seeing people walking out my front door after a workshop with their colourful weaving looms, feeling so happy and satisfied." And no doubt recharged after spending time in this wonderfully calm and soothing home.

ARTWORKS (THIS PAGE, FROM LEFT) JOHN OLSEN, JUAN HENG, PIA WÜSTENBERG, TAMMY KANAT, (OPPOSITE) KAREENA ZEREFOS, ALESANDRO LJUBICIC

ARTISTIC LICENCE

"Art is essential in my home," says homeowner Tammy (pictured). "It's like therapy if you can connect with it." In the living room (opposite) is a mix of stunning works, while a colourful weave, created by Tammy, takes pride of place over the fireplace. A pair of Jordan sofas are placed for easy conversation, while a chunky handwoven throw is used by her family to get cosy on cooler nights. The bar cart

at the rear, inherited from Jonathan's parents, provides added elegance and a 'Mirror Vintage Nayoma' rug – from Tammy's collection for Cadrys – links the space to the dining area (below). A supersized pendant from Surround Interiors suspended over the vast dining table, designed by Jonathan, defines the space. Black Hans Wegner 'Wishbone' chairs from Living Edge contrast beautifully with the table's rich timber. >



KITCHEN

Tammy chose to keep the kitchen joinery simple and seamless to create a sense of calm in this open-plan living area. The kitchen essentially fades into the background and allows textures in the other spaces to really shine. A Caesarstone benchtop in Snow is an ideal match to the 2-pac joinery, while a set of 'Pilo' stools by Bonaldo (available from Homeware Gallery) tuck easily underneath.

"MY DESIGN AESTHETIC IS MY *own mix* OF *objects*, PAINTINGS AND ACCESSORIES THAT MY HUSBAND AND I HAVE *built up* OVER TIME" ~ TAMMY



LIVING ROOM Greenery in all forms thrives throughout Tammy and Jonathan's home and is a simple and affordable option to lift any space (try Garden Life or The Soul Pantry for similar plants, pots and terrariums). "I like to bring the outdoors in, as it creates a calm home and an inspiring creative workspace," says Tammy. This close connection to the great outdoors is mirrored in the stunning *Le Vol 1 Detail* painting by Valerie Sparks above the sofa. Adding to the sophistication of the space is an elegant marble coffee table, designed by Jonathan, and 'Bosko' sofas from Jardim, which are home to a collection of textural cushions (for similar, try Nathan + Jac and MRD Home). >

MAIN BEDROOM

The couple's bedroom, which nudges up to a deck overlooking the garden, is a place of rest and calm. Sage-green bedlinen from Cultiver picks up on the hues of various artworks and plants, while the outlook over the lush gardens continues the layers of green. "Waking up to the garden view

is a beautiful way to start our day," says Tammy. A stunning woven artwork created by Tammy (her works are available to purchase through her website) brings texture to the space, while warm wooden tones are provided by an Arne Vodder lowboy and a Niels Otto Moller '#63' bench, both from Great Dane Furniture.

we love

TEXTURAL STYLE

Infusing the home with strategically placed textures – the smooth leather of the armchair, woven papercord on the bench, tasselled throws and wool – without making every surface tactile is an easy way to create a calming atmosphere. To achieve the look that Tammy has created in her and Jonathan's bedroom, try Nathan + Jac's 'Snowdrift' throw, \$270. Visit nathanjac.com.au. >

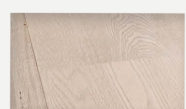
CARPET
Get the look
with Gaia Wool
'The Rivers' in
Warrego, \$76.50/sqm,
Carpet Court.

"I LIKE TO *surround* MYSELF WITH
things THAT HAVE *meaning*" - TAMMY

ENSUITE

The couple's ensuite, which is connected to the main bedroom through a large walk-in robe, is a lesson in understated elegance. White cabinetry and a statement bath from Apaiser are warmed by Harper & Sandilands panelling that extends along the floor and

up the wall beside the shower zone. Requisite touches of greenery also offset the room's white base, while a colourful 'Expose' runner from Tammy's Cadrys range provides warmth underfoot. Ceramics by Debbie Weinmann continue the organic feel of the gorgeous retreat.



FLOORING
Get the look with 'Architect Collection' floorboards in White Smoked, from \$85/sqm, Royal Oak Floors.



FRANKIE'S BEDROOM

Daughter Frankie's room (top left) is a relaxed and laid-back space, with a beautiful artwork, *Face*, created by Frankie's grandfather Tim Blashki, taking centre stage. The Ferruccio Laviani 'FL/Y' pendant light by Kartell (available from Space) and a Lightly 'Bon Bon' fluoro vase from Turner & Lane add a vibrant splash of colour, with beautifully rich carpet (for similar try 'Bellavista' in Steel from Hycraft) providing an organic counterbalance.

RETREAT

Overlooking the garden, Tammy's delightful studio retreat (top right) is the perfect place for artistic inspiration. "It has a peaceful and creative energy," says the artist, whose work has just been exhibited at Milan Design Week along with fellow artisans Pia Wüstenberg and Katharina Eisenkoeck. The space

slips easily from relaxation to energy thanks to a Jordan sofa matched with a 'Waves' rug in Turquoise from Cadrys. Other colourful and textural pieces, such as the woven side table by Tammy and the Missoni Home 'Rafah #65' ottoman from Safari Living, enliven the room with creativity.

STUDY

The family's home office (right) is filled with treasured possessions, including an artwork by Charles Blackman (above an inherited armchair that has been re-covered in orange velvet) and a stunning monochromatic *Dancing Lady* artwork created by Tammy's father Tim (behind the desk). The family's chessboard sits on the marble-topped desk (from Living Interiors), ready for a game, while an antique rug from Cadrys and a colourful collection of Tammy's throws and woven sculptures adds to the eclectic mix. >



ARTWORKS (THIS PAGE, CLOCKWISE FROM TOP LEFT) ARTIST UNKNOWN, TAMMY KANAT

"GREENERY IS A *must*, EITHER
HOLIDAYING IN THE BUSH OR BEING
SURROUNDED BY LOTS OF *plants* IN
MY *home* AND THE GARDEN" ~ TAMMY



the maker's mark

INSIDE STORY

TAMMY & JONATHAN'S HOME

Who lives here?

Tammy (pictured), a textile artist (tammykanat.com.au); her husband, Jonathan, a managing director; daughters Lexi, 17, and Frankie, 16; son Toby, 13; and Benny the labrador.

What is your decorating style?

Tammy: "It evolves organically with careful decisions over time as we find objects with qualities that are real, timeless and we have a connection with. We surround ourselves with art and objects we can engage with and relate to."

How does your family use the home?

"We have a communal area, then the kids have their upstairs zone and we have our downstairs zone. It gives everyone the personal space they need."

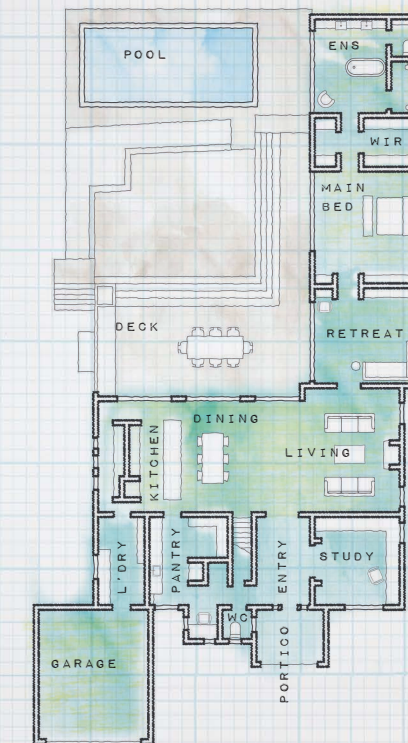


OUTDOOR AREA With its lush greenery overhead, the relaxing zone (opposite & above) is a magnet for the family, as well as Benny the labrador. A hardy 'Spinnaker' table from Roda is teamed with black chairs from Space (try their B&B Italia 'Crinoline' chairs for similar). **STUDIO** Tammy's light-filled weaving retreat (top) is her creative hub. **TAPESTRY** For the development of her Cadrys range, Tammy first created small tapestries (right) where the designs could then be translated and upscaled into larger rugs (here, is 'Expose').

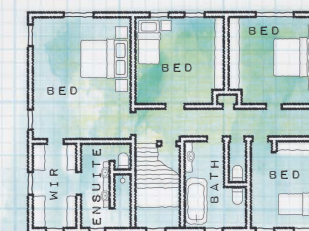


PLANS

GROUND FLOOR



FIRST FLOOR



CONTACTS

Interior designer
MBA Design Group,
(03) 8256 1766,
mbadesign.com.au.

Garden designer
Paul Bangay,
(03) 9427 9545,
paulbangay.com.